

## VIRTUAL STORAGE

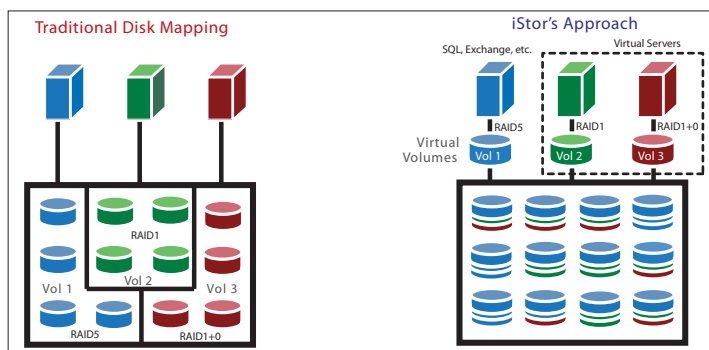
- Quick Setup
- Simplified Storage Management
- Dynamically Migrate RAID Levels
- Grow volumes on the fly
- Maximize Performance, Capacity, Data Protection
- Dynamically Add & Fully Utilize Larger Capacity Drives
- Optimize Applications for Performance & Protection
- Multiple RAID Levels per Disk
- No RAID Groups or LUNs to Configure!
- Multi-chassis Support
- Manage Storage from Any Web Browser
- Simple SSL Management Security

### Powerful Technology

The iStor<sup>®</sup> Management Center enables the virtual storage capabilities of the iStor IP SAN storage system. The virtual pool of storage frees the storage user from the complexities of traditional RAID configuration, eases management and increases the efficiency of disk utilization; all while optimizing the performance of all applications. The simple web-based interface includes quick start and volume creation wizards to accelerate users from setup to SAN with blazing speed. Volumes are easily created with just a few wizard steps. Novice users can select volume configurations from pre-defined applications while storage experts maintain granular control over their configurations. The iStor Management Center manages powerful virtual storage that is easily carved up into individual customized volumes. This comprehensive storage management suite facilitates remote configuration and single-pane-of-glass monitoring of all iStor storage subsystems in the SAN, while providing rich features allowing users to install, configure, and maintain their online network storage with uncommon ease and flexibility.

### Ease of Use

The intuitive Graphical User Interface (GUI) requires no storage expertise, thereby freeing the network administrator to focus on user needs. The iStor Management Center increases visibility with unified views of your storage environment simplifying anywhere, anytime administration and control of all iStor storage arrays. Configure storage and create volumes in a matter of seconds. Attach heterogeneous servers to a single storage pool and connect applications to volumes with no downtime. Discover, monitor, configure all iStor storage systems from anywhere on the IP SAN, run from any operating system. Maximize your investment while enjoying lower iSCSI Total Cost of Ownership.



### Virtual Storage

Allocating storage from a single pool means there is no pre-configuration of RAID groups or LUNs. The volume creation wizard tailors volume RAID levels specific to each application and optimizes the RAID performance for each server. Multiple RAID levels on the same set of drives increases storage utilization efficiency and optimizes storage performance for all applications by maximizing spindle count.

The iStor Management Center fully utilizes the storage capacity of mixed drive sizes allowing newer larger drives to be added to a system with older smaller drives. In addition to enabling powerful features such as dynamic RAID level migration and online capacity expansion, during disk I/O, iStor Management Center optimizes storage utilization by allocating volumes created from drives of dissimilar capacity and technology. The iStor Management Center facilitates iStor's advanced storage virtualization firmware delivering enterprise-class storage benefits at affordable price points.

### Management Flexibility

The iStor Management Center channels its power and simplicity through three convenient interfaces: Graphical User Interface (GUI), Command Line Interface (CLI), and Virtual Disk Services (VDS). The GUI provides quick and easy storage management. The CLI provides powerful scripting abilities. VDS interfaces to standard Microsoft storage management tools such as Storage Manager for SAN, DiskRAID, etc.



**iStor Networks, Inc.**  
STORAGE FOR YOUR NETWORKED WORLD™

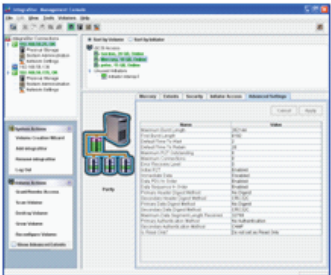


## TECHNICAL SPECIFICATIONS

### Ready To Go in Minutes

There is a Start-Up Wizard to configure the storage array in minutes, and a Volume Creation Wizard that guides the user (novice or expert) through steps to optimize storage performance, capacity, and resiliency. SSL ensures protection of the management connection.

Maintaining the SAN is easy using the connection panel to select the chassis & View. Each View simplifies navigation by logically dividing up the screen into sections that are consistent no matter what aspect of the system is being managed. The iStor Management Center displays a lists of items, details of each item, and actions that can be performed on the items.

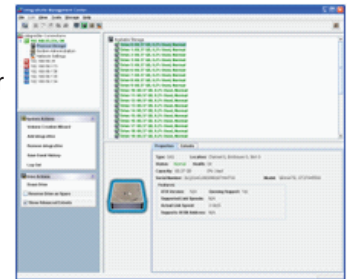


### Volume View

The Volume View displays name, size, status, and health information about all volumes, along with additional details (drive composition, authentication & access security, other drive & connection details). The screen is intelligently organized with volume details in the lower right section and volume & management actions in the lower left. Volumes can be scanned, grown, or reconfigured at any time immediately or scheduled) with live I/O. Initiators can be added or removed, and access control assigned. Volumes can be destroyed and freed back to the storage pool. Actions are context-sensitive depending on whether the view is sorted by volume or by initiator.

### Physical Storage View

The Physical Storage View displays properties & composition of each physical disk drive: drive number, total capacity, percentage of capacity used, and drive status. Drives can be downed for removal or upgrade. Drives can be configured as spare. SMART (health & status) information can be read, along with volume extents comprising the drive and other drive specific details (capacity, drive type, serial number, etc.).



### System Administration View

System Administration View consolidates the top level view of the storage system using easy to read icons comprising storage usage, volumes created, number of initiators & initiator connections. The System Actions Panel is common across all views, and enables adding or removing iStor systems to the SAN and creating volumes. Three Activity Tabs show details of operational history, scheduled tasks, and system administration settings. Configurations can be saved & restored for hardware upgrade. User accounts can be created & managed, firmware can be upgraded, system policies can be managed, and factory defaults can be restored. The system can be restarted or shut down, and the GUI can be disconnected.

### Network Settings View

Network Settings View displays IP address and connection status of the management port, data ports, and Link Aggregation Groups (LAGs). Network settings for ports (portals, VLANs, LAGs, MTU sizes) can be created, configured, and modified. VLAN IDs can be set, ports can be grouped, IP addresses created & deleted, and the storage system can ping from any port (data or management) to any IP address on the SAN.



#### About iStor Networks, Inc.

iStor Networks is a leading provider of iSCSI network storage solutions. IP based storage area networks (SAN) represent the fastest growing segment of the storage industry and iStor is uniquely positioned to provide the next generation of network storage technology to the marketplace.